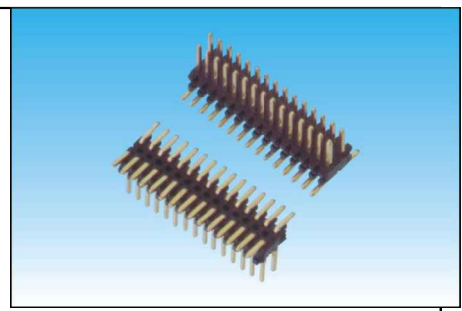
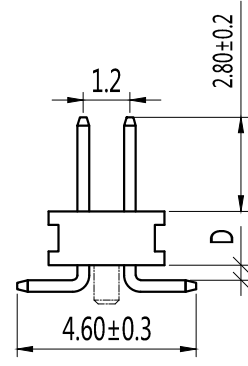
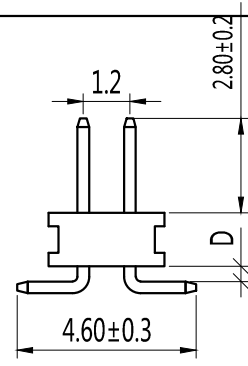
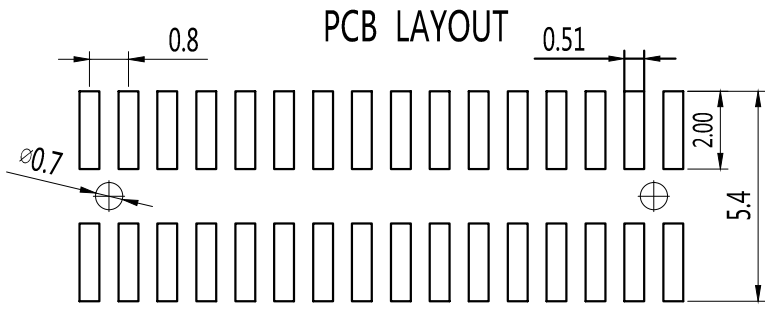
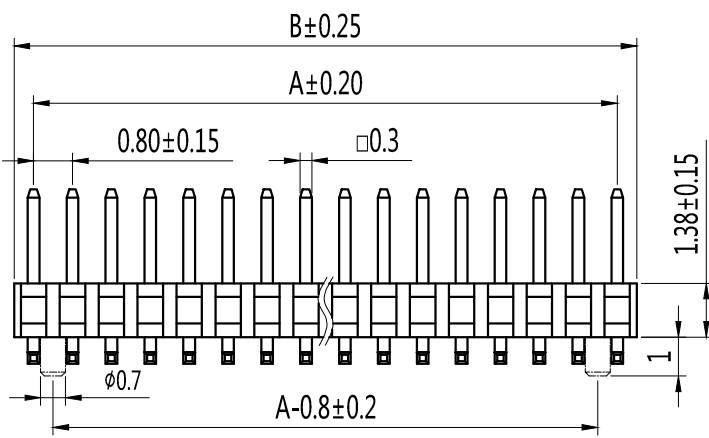
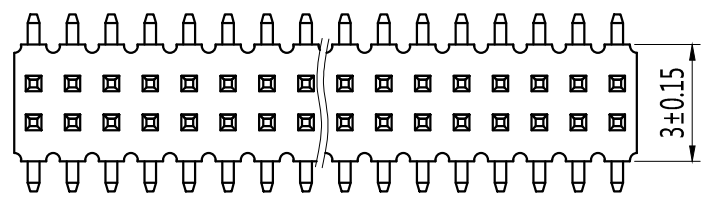


Pin数	尺寸A	尺寸B
2	0.8	1.6
3	1.6	2.4
4	2.4	3.2
5	3.2	4.0
6	4.0	4.8
7	4.8	5.6
8	5.6	6.4
9	6.4	7.2
10	7.2	8.0
11	8.0	8.8
12	8.8	9.6
13	9.6	10.4
14	10.4	11.2
15	11.2	12.0
16	12.0	12.8
17	12.8	13.6
18	13.6	14.4
19	14.4	15.2
20	15.2	16.0
21	16.0	16.8
22	16.8	17.6
23	17.6	18.4
24	18.4	19.2
25	19.2	20.0
26	20.0	20.8
27	20.8	21.6
28	21.6	22.4
29	22.4	23.2
30	23.2	24.0
31	24.0	24.8
32	24.8	25.6
33	25.6	26.4
34	26.4	27.2
35	27.2	28.0
36	28.0	28.8
37	28.8	29.6
38	29.6	30.4
39	30.4	31.2
40	31.2	32.0
41	32.0	32.8
42	32.8	33.6
43	33.6	34.4
44	34.4	35.2
45	35.2	36.0
46	36.0	36.8
47	36.8	37.6
48	37.6	38.4
49	38.4	39.2
50	39.2	40.0



技术规范:
 额定电流 : 0.75AMP
 适用温度 : -40°Cto+105°C
 接触电阻 : 30mΩ Max
 绝缘电阻 : 1000MΩ Min
 耐电压 : AC 500V
 绝缘材料 : Polyester (UL94V-0)
 Standard:PA-6T
 端子材质 : Brass
 电镀规范 : Au or Sn Over 50u" Ni

P a - 10 - 1 - 2 - 5p - a - a - s - 0

排针系列	间距	塑高	双塑	单排	PIN位	电镀	材质	角度	备注
a-0.8mm	1.0-10	1.0-10	1-单塑	1-单排	1~40P/50P	A-1u"	A-PBT	S=180°	0-3.0
b-1.0mm	1.5-15	1.5-15	2-双塑	2-双排	2~40/50P	B-3u"	B-PA46	R=90°	1-3.0/6.0(双塑)
c-1.27mm	1.6-16	1.6-16	3-三塑	3-三排	3~40/50P	C-5u"	C-PA6T	M=SMT	2-3.0/3.0(双塑)
d-2.0mm	1.7-17	1.7-17		4-四排	4~40/50P	D-10u"	D-PA9T	Z=Z型	3-2.8/4.0(双塑)
e-2.5mm	2.0-20	2.0-20				E-15u"	E-LCP	Y=135°	4-2.6/3.5(双塑)
f-2.54mm	2.54-25	2.54-25				F-30u"		L=卧式SMT	其它另做说明
g-3.96mm						S-镀锡			
h-5.08mm						H-半金锡			

TOLERANCE:

X.	±XXX
.X	±0.20
.XX	±0.10
ANG.	



上海狮拓电子科技有限公司

产品名称:
产品料号:

THIRD ANGLE PROJECTION

簽名 _____
日期 _____
審核 _____
日期 _____

客戶確認

承認 _____ 日期 _____
 駁回 _____ 日期 _____

0.8x1.2mm双排针, SMT, 塑高1.38mm 可带内柱
 Spec:0.8x1.2mm Pin Header, Dual Row, SMT
 Positions : 2x5~2x50
 Plastics Height : 1.38mm