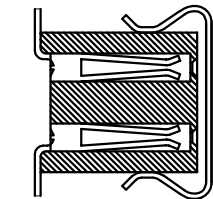
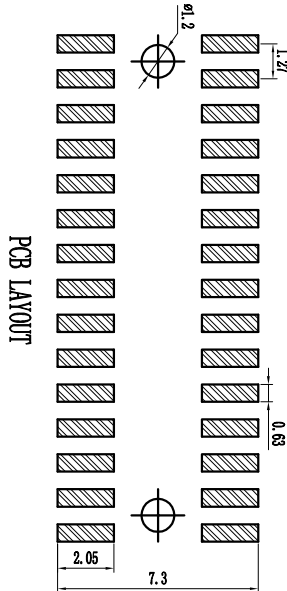
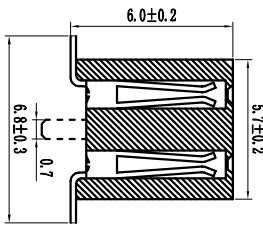
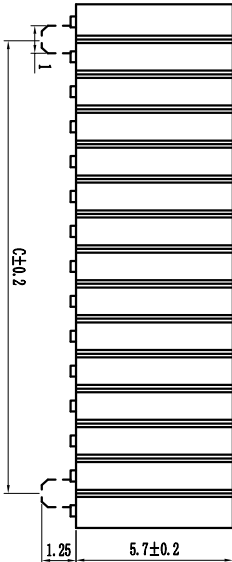
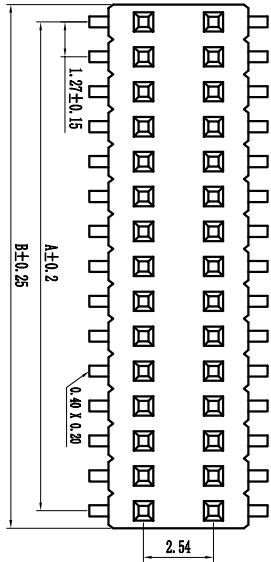


Pin#	F+1A	F+1B	F+1C
2x2	1.27	2.94	0.00
2x3	2.54	4.21	1.27
2x4	3.81	5.48	2.54
2x5	5.08	6.75	3.81
2x6	6.35	8.02	5.08
2x7	7.62	9.29	6.35
2x8	8.89	10.56	7.62
2x9	10.16	11.83	8.89
2x10	11.43	13.10	10.16
2x11	12.70	14.37	11.43
2x12	13.97	15.64	12.70
2x13	15.24	16.91	13.97
2x14	16.51	18.18	15.24
2x15	17.78	19.45	16.51
2x16	19.05	20.72	17.78
2x17	20.32	21.99	19.05
2x18	21.59	23.26	20.32
2x19	22.86	24.53	21.59
2x20	24.13	25.80	22.86
2x21	25.40	27.07	24.13
2x22	26.67	28.34	25.40
2x23	27.94	29.61	26.67
2x24	29.21	30.88	27.94
2x25	30.48	32.15	29.21
2x26	31.75	33.42	30.48
2x27	33.02	34.69	31.75
2x28	34.29	35.96	33.02
2x29	35.56	37.23	34.29
2x30	36.83	38.50	35.56
2x31	38.10	39.77	36.83
2x32	39.37	41.04	38.10
2x33	40.64	42.31	39.37
2x34	41.91	43.58	40.64
2x35	43.18	44.85	41.91
2x36	44.45	46.12	43.18
2x37	45.72	47.39	44.45
2x38	46.99	48.66	45.72
2x39	48.26	49.93	46.99
2x40	49.53	51.20	48.26
2x41	50.80	52.47	49.53
2x42	52.07	53.74	50.80
2x43	53.34	55.01	52.07
2x44	54.61	56.28	53.34
2x45	55.88	57.55	54.61
2x46	57.15	58.82	55.88
2x47	58.42	60.09	57.15
2x48	59.69	61.36	58.42
2x49	60.96	62.63	59.69
2x50	62.23	63.90	60.96



F a-10-1-2-5p-a-a-s-D-0									
焊料	间距	厚度	焊盘	焊脚	焊盘	角度	端子	备注	
	c-1.0mm		1-单排	1-10°	A-10°	S-10°	12.5mm间距	0-3.0	
	b-1.0mm		2-双排	B-50°	B-70°	R-90°	11.0mm间距	1-3.0/0.6 (双排)	
	c-1.27mm		3-三排	C-50°	C-70°	C-70°	12.2mm间距	2-3.0/3.0 (双排)	
	d-2.0mm		4-四排		D-10°	D-70°	左弯	3-2.8/4.0 (双排)	
	f-2.5mm				F-15°	F-12°	1-50°	4-2.6/3.5 (双排)	
	f-3.5mm				F-30°		100°-非焊接端子	其它另做说明	
	f-5.0mm				S-弯脚		100°-非焊接端子		
	f-5.0mm				H-弯脚		100°-非焊接端子		
									注: 长脚时以斜杆计

技术规范:
 额定电流 : 1AMP
 适用温度 : -40°C to +105°C
 接触电阻 : 20mΩ Max
 绝缘电阻 : 1000MΩ Min
 耐电压 : AC 500V
 绝缘材料 : Polyester (UL94V-0)
 Standard: PA-6T
 端子材质 : Bronze
 电镀规范 : Au or Sn Over 50u" Ni



STO 上海狮拓电子科技有限公司

TOLERANCE:
 X ±0.05
 XX ±0.10
 ANG.

產品名稱:
 產品料號:
 THIRD ANGLE PROJECTION

客戶確認
 姓名: _____
 日期: _____
 簽名: _____
 日期: _____

1.27mm 双排母, 间距 5.7mm (可带内柱)
 Spec: 1.27mm Female Header, Dual Row, SMT with Locating Peg
 Positions: 2X2'2X50
 Plastics Height: 3.4mm